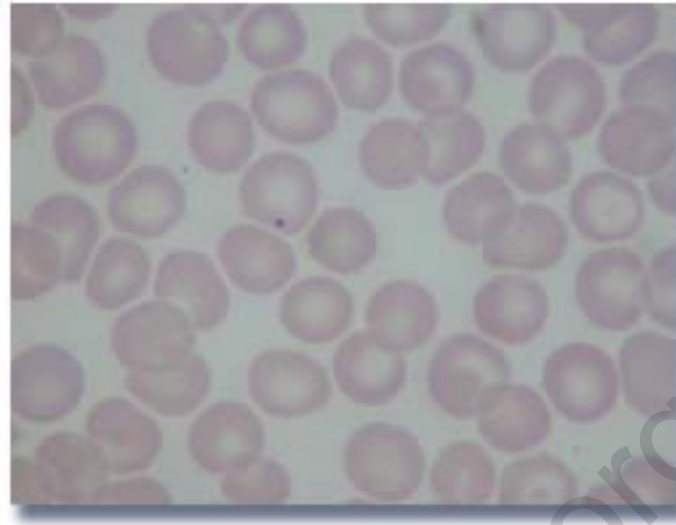


Clinical Quiz #9

An infant presented with prolonged jaundice and heart murmur. Ultrasound showed a triangular cord sign without identifiable gallbladder. The peripheral blood smear showed:

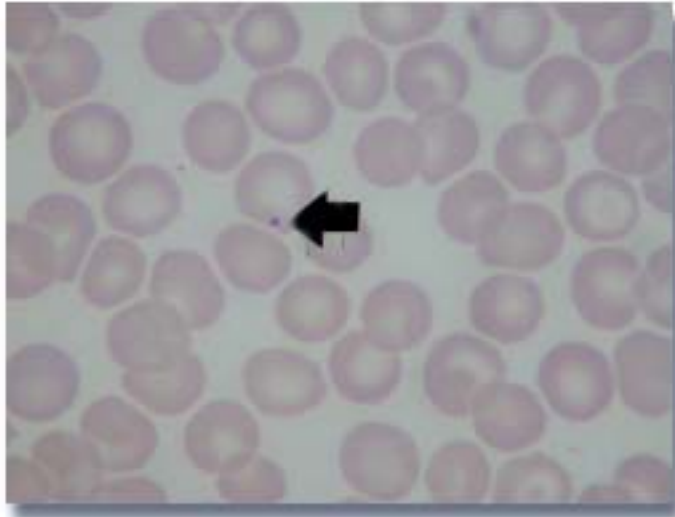


What is your diagnosis ?
[Click for answers](#)

Contributed by Nuthapong Ukarapol, MD. Chiang Mai University

Pthaigastro.org

Clinical Quiz #9



Diagnosis: Biliary atresia- embryonic type

The pathogenesis of this type of BA has been postulated to link with defective organogenesis. The patient usually presents with prolonged jaundice since birth. Association with complex heart disease and polysplenia/asplenia are frequently noted compared to the postnatal type of biliary atresia. The peripheral blood smear showed Howell-Jolly body, associated with splenic dysfunction.